

# SUBWAY PROGRAM

## KEY ISSUES

January 20, 2023

# PURPOSE

New and extended subway lines will put hundreds of thousands of people within easy reach of fast, reliable transit. The priority projects that will add more than 40 kilometers to the Greater Toronto Area's rapid transit network include:

- Non-Responsive
- The Ontario Line
- Non-Responsive
- Non-Responsive

This presentation provides an overview of the key current and anticipated issues Metrolinx is experiencing across the subway program and the details of our issues management strategy.

Top issues are identified first, followed by additional issues organized by project in the Appendix.

## TABLE OF CONTENTS: TOP ISSUES

### SUBWAY

### ISSUE

### SLIDE

Ontario Line

Osgoode Station - Propose Station Location, Archaeology  
Work and Tree Removals

13

Non-Responsive

Moss Park Station

15

# Non-Responsive

Non-Responsive

Non-Responsive

Non-Responsive

Non-Responsive

Non-Responsive



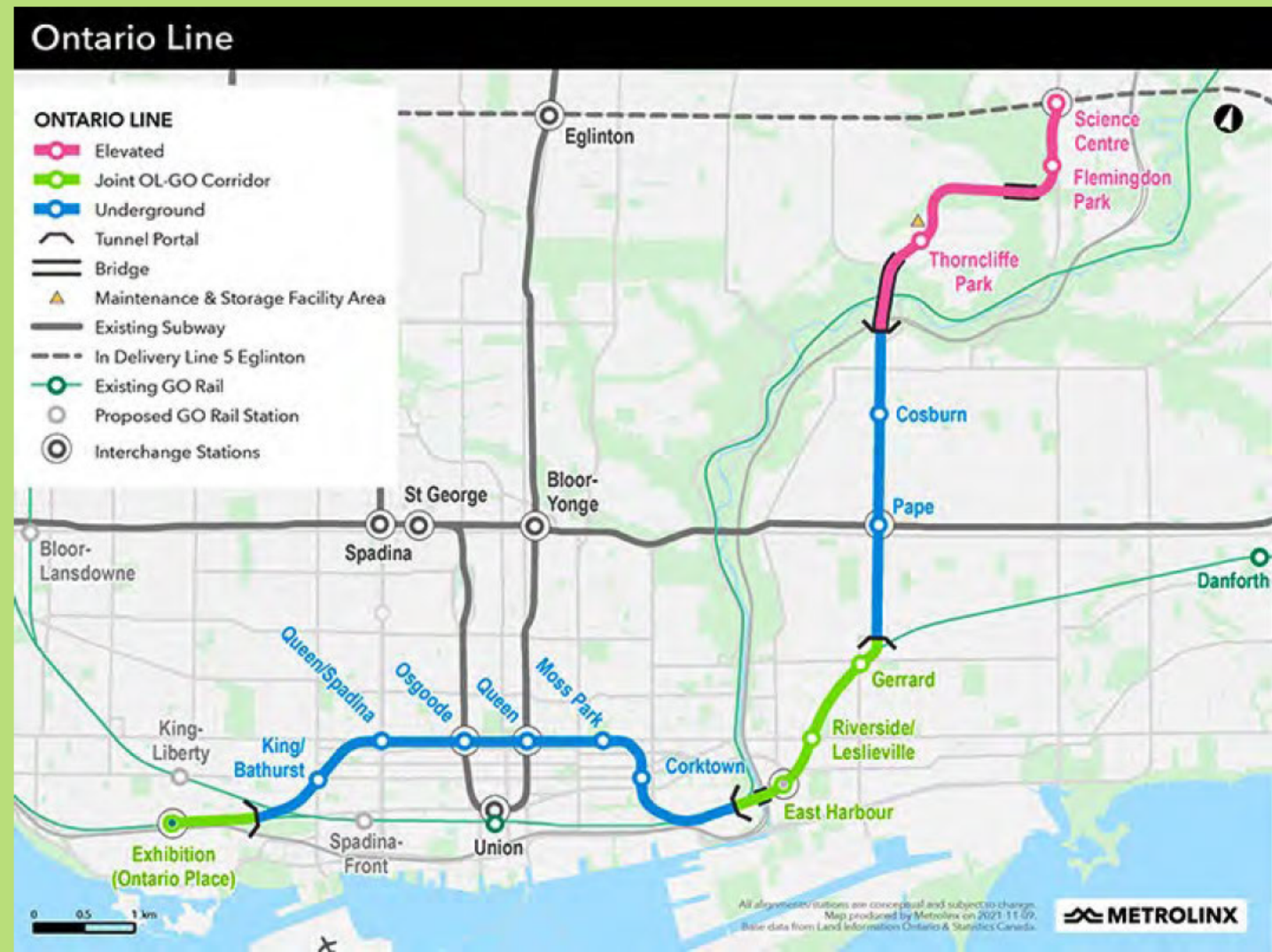
Non-Responsive

Non-Responsive

# TOP ISSUES

# SUBWAY PROGRAM

# ONTARIO LINE



# Osgoode Station - Proposed Station Location, Archaeology Work and Tree Removals

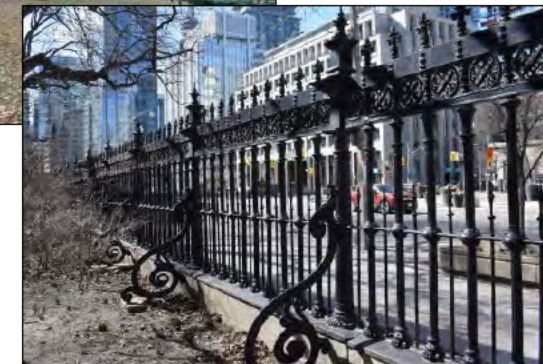
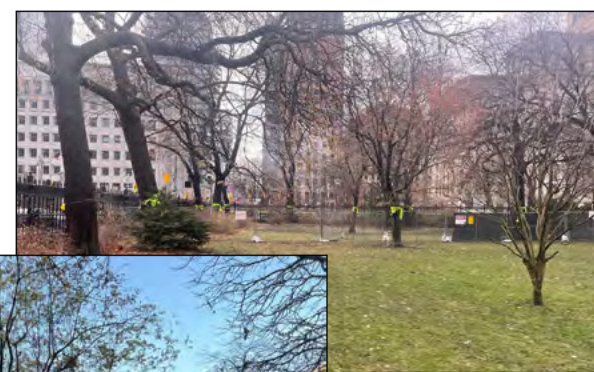
**Community Flashpoint:** Community members, local leaders, Indigenous groups and law associations oppose the station location and tree removals at this historic, downtown site.

## Details:

- Stage 2 Archaeology Assessment was not completed in December as planned due to outstanding concerns raised by Haudenosaunee Development Institute (HDI).
- Significant negative reaction from the community regarding the planned tree removals to make way for the new Osgoode Station.
- The Law Society of Ontario, Campbell House Museum and community groups have vocally opposed the proposed station location at the southwest corner of Osgoode Hall. As a result, the City of Toronto has engaged a third-party review of the technical plans for the location.

## Timeline:

- Archaeological works to be completed prior to property handover to OTG on May 1, 2023
- For the Advance Works, intermittent northbound and southbound lane closures until October 2023
- Full closure of University Ave northbound will take place on:
  - Jan 27-30, 2023 (Friday 7pm- Monday 6am)



## Issues Management Strategy - Being Implemented

### Pre-emptive Mitigation(s):

- Reduced footprint of station by 30 percent.
- Metrolinx is exploring options to mitigate the concerns raised by First Nations, in particular HDI.
- City of Toronto has retained a third-party to review the technical proposal for the proposed Osgoode Station location.
- The City to provide update on the results of the third-party review to community groups.
- Metrolinx to host a community meeting and have the City provide update on third-party review.
- Metrolinx to provide community with an update on the next steps at the Osgoode station site.

### Ongoing Management:

- Regular meetings with Chief Justice of Ontario and Law Society of Ontario.
- Establishment of CLC to keep community and stakeholders informed of construction activities.
- Community notices will be issued in advance of upcoming works within the area.

Non-Responsive

# Moss Park Station

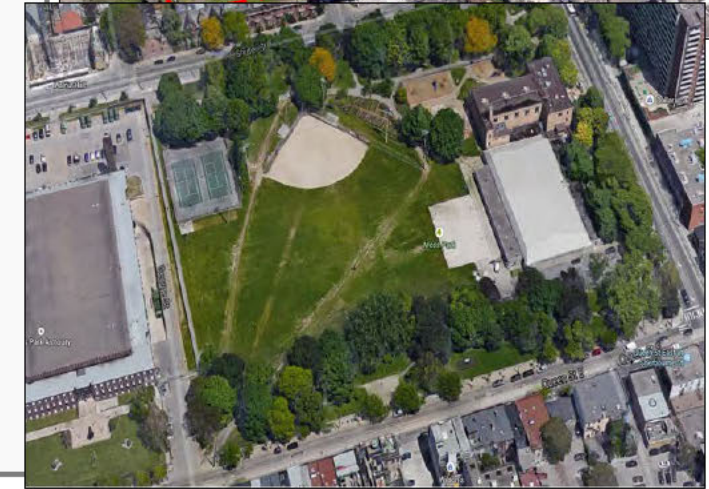
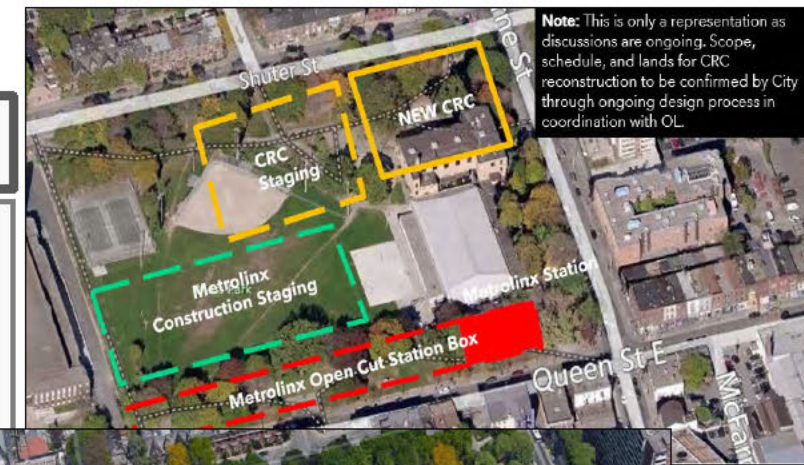
**Community Flashpoint:** Metrolinx construction will remove most of the trees along the south side of this park, which are used for shade and shelter by vulnerable residents of the area.

## Details:

- Tree removals are planned for mid-January to allow for Stage 3/4 Archaeology work.
- January 9, 2023, site mobilization/preparations began including fencing off park space in advance of tree removals and parking lot demolition. However, fencing was removed on January 19, [REDACTED]
- Queen Street westbound curb lane between Sherbourne and George Streets to be closed for construction/staging area in spring 2023.
- Community benefits are of great interest, particularly employment opportunities.
- Metrolinx working with the City and community groups to find alternate locations for vulnerable outreach services that will be displaced due to construction at Queen and Sherbourne Streets.
- No impact to the existing Moss Park Arena or John Innis Community Recreation Centre by Metrolinx, however, the city will be undertaking concurrent renovations that will impact access and park space.

## Timeline:

- January 5<sup>th</sup>, 2023: Site handover to OTG
- January 9, 2023: Fencing installed around entire work area
- January/February: Tree removals begin (61 trees removed. 22 are non-indigenous)
- Early spring 2023: Queen Street lane closure



## Issues Management Strategy - Being Implemented

### Pre-emptive Mitigation(s):

- Enhanced compensation provided to the City of Toronto at a rate about five times higher than normal to support future vegetation restoration. This is warranted due to the level of impact, uniqueness of the situation, and integration of the park with the community.

### Ongoing Management:

- Negotiations with Indigenous community opposing the removals.
- Established CLC in place to keep community informed and address concerns.
- Metrolinx continues to work with the City to identify temporary parking area, and to coordinate the integration of the station design with the Moss Park Revitalization Project lead by the City.
- Previously donated wood from removed trees to community centre wood-working program.

Non-Responsive



Non-Responsive

Non-Responsive

Non-Responsive

Non-Responsive

Non-Responsive

Non-Responsive

Non-Responsive

Non-Responsive



Non-Responsive

Non-Responsive

# **APPENDIX KEY ISSUES – BY SUBWAY PROJECT**

Non-Responsive



Non-Responsive

Non-Responsive

Non-Responsive



Non-Responsive

Non-Responsive

Non-Responsive

Non-Responsive

Non-Responsive

Non-Responsive

Non-Responsive

Non-Responsive



Non-Responsive

Non-Responsive

Non-Responsive

Non-Responsive

Non-Responsive

Non-Responsive

Non-Responsive

Non-Responsive



Non-Responsive

Non-Responsive

Non-Responsive

Non-Responsive

Non-Responsive

Non-Responsive

Non-Responsive

Non-Responsive



Non-Responsive

Non-Responsive

Non-Responsive

Non-Responsive

Non-Responsive

Non-Responsive

Non-Responsive

Non-Responsive



Non-Responsive

Non-Responsive

Non-Responsive

Non-Responsive

Non-Responsive

Non-Responsive

Non-Responsive

Non-Responsive





# SUBWAY PROGRAM

## KEY ISSUES

March 2023 Minister Briefing

# PURPOSE

New and extended subway lines will put hundreds of thousands of people within easy reach of fast, reliable transit. The priority projects that will add more than 40 kilometers to the Greater Toronto Area's rapid transit network include:

- Non-Responsive
- The Ontario Line
- Non-Responsive
- Non-Responsive

This presentation provides an overview of the current and anticipated key issues Metrolinx is experiencing across the subway program and the details of our issues management strategy.

Top issues are identified first, followed by additional issues organized by project in the Appendix.

Non-Responsive

Non-Responsive

Non-Responsive

Non-Responsive

# TABLE OF CONTENTS: TOP ISSUES

THEME

ISSUE

SLIDE

# Non-Responsive

Trees & Vegetation

Osgoode Station - Proposed Station Location, Archaeology Work and Tree Removals (OL)

29

Non-Responsive

Moss Park Station (OL)

32

# Non-Responsive



Non-Responsive

Non-Responsive

Non-Responsive

Non-Responsive

Non-Responsive

Non-Responsive

Non-Responsive

Non-Responsive



Non-Responsive

Non-Responsive

Non-Responsive

Non-Responsive

Non-Responsive

Non-Responsive

Non-Responsive

Non-Responsive



Non-Responsive

Non-Responsive

Non-Responsive

Non-Responsive

# TREES & VEGETATION

# Osgoode Station - Proposed Station Location, Archaeology Work and Tree Removals

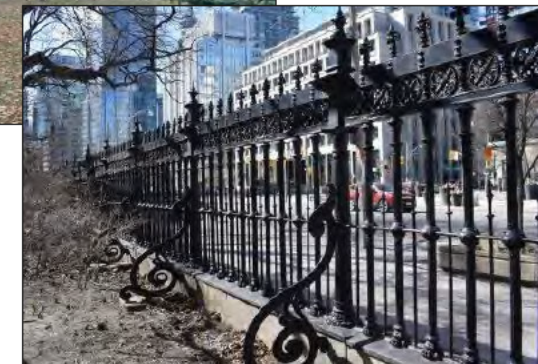
**Community Flashpoint:** Community members, local leaders, Indigenous groups and law associations oppose the station location and tree removals at this historic, downtown site.

## Details:

- Stage 2 Archaeology Assessment was not completed in December as planned due to outstanding concerns raised by Haudenosaunee Development Institute (HDI).
- Significant negative reaction from the community regarding the planned tree removals to make way for the new Osgoode Station.
- The Law Society of Ontario, Campbell House Museum and community groups have vocally opposed the proposed station location at the southwest corner of Osgoode Hall. As a result, the City of Toronto has engaged a third-party review of the technical plans for the location.

## Timeline:

- Archaeological works to be completed prior to property handover to OTG on May 1, 2023.
- For the Advance Works, intermittent northbound and southbound lane closures on University Ave. until October 2023.



## Issues Management Strategy - Being Implemented

### Pre-emptive Mitigation(s):

- Reduced footprint of station by 29 percent.
- Metrolinx is exploring options to mitigate the concerns raised by First Nations, in particular HDI.
- City of Toronto has retained a third-party to review the technical proposal for the proposed Osgoode Station location.
- The City to provide update on the results of the third-party review to community groups.
- Metrolinx hosted a community meeting with the City to provide update on third-party review February 1, 2023.
- Metrolinx to provide community with an update on the next steps at the Osgoode station site.

### Ongoing Management:

- Regular meetings with Chief Justice of Ontario and Law Society of Ontario.
- Establishment of CLC to keep community and stakeholders informed of construction activities.
- Community notices will be issued in advance of upcoming works within the area.



Non-Responsive

Non-Responsive



# Moss Park Station

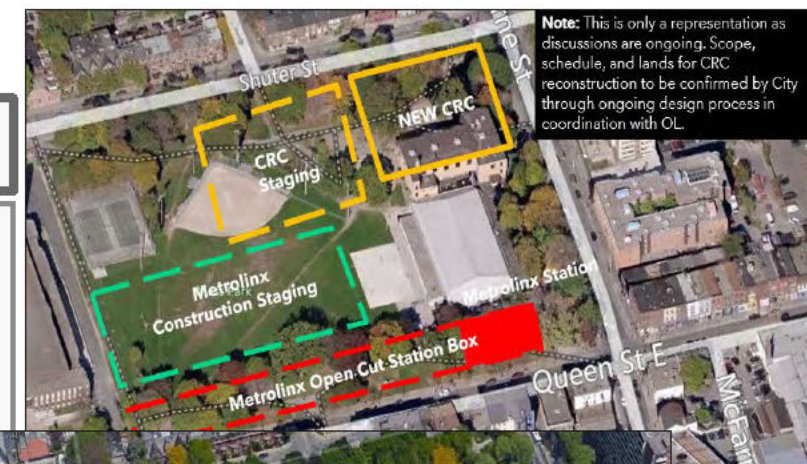
**Community Flashpoint:** Metrolinx construction will remove most of the trees along the south side of this park, which are used for shade and shelter by vulnerable residents of the area.

## Details:

- Tree removals began in February 2023 to allow for Stage 3/4 Archaeology work.
- January 9, 2023, site mobilization/preparations began including fencing off park space in advance of tree removals and parking lot demolition. However, fencing was removed on January 19, [REDACTED]
- Queen Street westbound curb lane between Sherbourne and George Streets to be closed for construction/staging area in spring 2023.
- Community benefits are of great interest, particularly employment opportunities.
- Metrolinx working with the City and community groups to find alternate locations for vulnerable outreach services that will be displaced due to construction at Queen and Sherbourne Streets.
- No impact to the existing Moss Park Arena or John Innis Community Recreation Centre by Metrolinx, however, the City will be undertaking concurrent renovations that will impact access and park space.

## Timeline:

- January 5<sup>th</sup>, 2023: Site handover to OTG.
- January 9, 2023: Fencing installed around entire work area.
- February 2023: Tree removals began (61 trees to be removed in total. 22 are non-indigenous).
- Early spring 2023: Queen Street lane closure.



## Issues Management Strategy - Being Implemented

### Pre-emptive Mitigation(s):

- Enhanced compensation provided to the City of Toronto at a rate about five times higher than normal to support future vegetation restoration. This is warranted due to the level of impact, uniqueness of the situation, and integration of the park with the community.

### Ongoing Management:

- Negotiations with Indigenous community opposing the removals.
- Established CLC in place to keep community informed and address concerns.
- Metrolinx continues to work with the City to identify temporary parking area, and to coordinate the integration of the station design with the Moss Park Revitalization Project lead by the City.
- Previously donated wood from removed trees to community centre wood-working program.



Non-Responsive

Non-Responsive

Non-Responsive

Non-Responsive

Non-Responsive

Non-Responsive

Non-Responsive



Non-Responsive

Non-Responsive

Non-Responsive

Non-Responsive

Non-Responsive

Non-Responsive

Non-Responsive

Non-Responsive



Non-Responsive

Non-Responsive

Non-Responsive

Non-Responsive

Non-Responsive

Non-Responsive

Non-Responsive

Non-Responsive



Non-Responsive

Non-Responsive

Non-Responsive

Non-Responsive

Non-Responsive

Non-Responsive

Non-Responsive

Non-Responsive



Non-Responsive

Non-Responsive

Non-Responsive



# KEY CONTACTS

Contact	Title	E-mail	Project(s)
<b>Non-Responsive</b>			
Darren Cooney	Director, Community Engagement	darren.cooney@metrolinx.com	Non-Responsive Ontario Line Non-Responsive

# SUBWAY PROGRAM

## KEY ISSUES: SUMMER/FALL 2023

AUGUST 2023

# PURPOSE

**The intent of this deck is to provide advance awareness of issues.**

This deck also provides an overview of high and moderate-risk key issues Metrolinx is currently experiencing or anticipated to experience during late-Summer and Fall 2023, organized by theme.




Lower impact issues are included in the Appendix.

Communications plans will be shared via the normal channels as required and as issues approach. Standalone briefings may be setup as needed.

# TABLE OF CONTENTS: HIGH/MEDIUM RATED ISSUES

THEME

ISSUE

Issue Rating Legend	
High	
Medium	
Low	

# Non-Responsive

Trees & Vegetation

Osgoode Station (OL)

Non-Responsive

Moss Park Station (OL)

Non-Responsive

# Non-Responsive



Non-Responsive

Non-Responsive

Non-Responsive

Non-Responsive

Non-Responsive

Non-Responsive

Non-Responsive

Non-Responsive



Non-Responsive

Non-Responsive

Non-Responsive

Non-Responsive

Non-Responsive

# TREES & VEGETATION

## GENERAL SAMPLE MITIGATIONS

Careful selection of spaces required for development

Limit removals to only what is needed

Tree ceremonies, plantings and community give away events

Community working groups (Construction Liaison Committees)

Restoration plans co-created by arborists, First Nations, communities & municipalities

On average, 3 trees planted for every 1 removed

Reuse of tree logs and mulch donated back to community

Coordination with municipal vegetation and ravine strategies

Early, ongoing and transparent communication including briefings and notices



# Osgoode Station

Issue Rating: 

ONTARIO LINE

**Community Flashpoint:** Community members, local leaders, Indigenous groups and law associations oppose the station location and tree removals at this historic, downtown site.

- Details:**
- Significant negative reaction from the community, including legal challenges regarding the tree removals for the new Osgoode Station.
  - Following court proceedings, tree removals began in February 2023.
  - In addition, the Law Society of Ontario, Campbell House Museum and community groups have vocally opposed the proposed station location at the southwest corner of Osgoode Hall.
- Timeline:**
- Mid-June 2023: Stage 3 archaeology work began
  - Summer 2023: Archaeological work to be completed
  - Fall 2023: OTG to commence work pending results of archaeology work
  - Until Fall 2023: Watermain replacement on University Avenue; northbound lane closures



## Issues Management Strategy - Being Implemented

- Pre-emptive Mitigation(s):**
- Reduced footprint of station by 29 per cent.
  - City of Toronto retained a third-party to review the technical proposal for the proposed Osgoode Station location. On February 1, 2023, Metrolinx hosted a community meeting with the City to present its review.

- Ongoing Management:**
- Regular meetings with Chief Justice of Ontario and Law Society of Ontario.
  - Establishment of CLC to keep community and stakeholders informed of construction activities as well as one-on-one meetings with community organizations.
  - Community notices will be issued in advance of upcoming works within the area.

Non-Responsive



# Moss Park Station

Issue Rating:



ONTARIO LINE

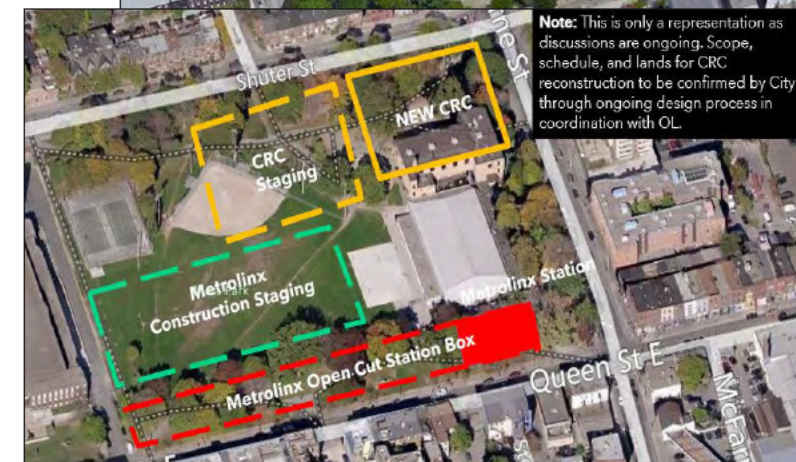
**Community Flashpoint:** Metrolinx construction will remove most of the trees along the south side of this park, which are used for shade and shelter by vulnerable residents of the area.

## Details:

- Following protests and interference by HDI in January 2023, tree removals were completed in February 2023 to allow for Stage 3/4 Archaeology work.
- Community benefits are of great interest, particularly employment opportunities. The Moss Park Coalition along with the Toronto Community Benefits Network hosted an emergency Town Hall on June 29 asking Metrolinx to come forward with meaningful benefits to the community. They voiced concerns that awarded contracts did not contain hiring targets requirements.
- Metrolinx working with the City and community groups to find alternate locations for vulnerable outreach services that will be displaced due to construction at Queen and Sherbourne Streets.
- No impact to the existing Moss Park Arena or John Innis Community Recreation Centre by Metrolinx, however, the City will be undertaking concurrent renovations that will impact access and park space.

## Timeline:

- February 2023: Tree removals (61 trees removed in total. 22 were non-indigenous).
- May 2023: Site mobilization for archaeology work to commence.



## Issues Management Strategy - Being Implemented

### Pre-emptive Mitigation(s):

- Enhanced compensation provided to the City of Toronto at a rate about five times higher than normal to support future vegetation restoration. This is warranted due to the level of impact, uniqueness of the situation, and integration of the park with the community.

### Ongoing Management:

- Negotiations with Indigenous community opposing the removals.
- Established CLC in place to keep community informed and address concerns.
- Metrolinx continues to work with the City to identify temporary parking area, and to coordinate the integration of the station design with the Moss Park Revitalization Project lead by the City.
- Previously donated wood from removed trees to community centre wood-working program.

Non-Responsive

Non-Responsive

Non-Responsive

Non-Responsive

Non-Responsive

Non-Responsive

Non-Responsive



# APPENDIX

## A. KEY CONTACTS

Contact	Title	E-mail	Project(s)
<b>Non-Responsive</b>			
Darren Cooney	Director, Community Engagement	darren.cooney@metrolinx.com	Non-Responsive Ontario Line Non-Responsive

Non-Responsive

Non-Responsive

Non-Responsive

Non-Responsive

Non-Responsive

Non-Responsive



Non-Responsive

Non-Responsive

Non-Responsive

Non-Responsive

Non-Responsive

Non-Responsive

Non-Responsive

Non-Responsive



Non-Responsive

Non-Responsive

Non-Responsive

Non-Responsive



# **SUBWAY PROGRAM**

## **KEY ISSUES: SUMMER/FALL 2023**

JULY 2023

# PURPOSE

**The intent of this deck is to provide advance awareness of issues.**

Communications plans will be shared via the normal channels as required as issues approach, and detailed briefings may be setup as needed.




This presentation provides an overview of high and moderate-risk key issues Metrolinx is currently experiencing or anticipated to experience during Summer/Fall 2023, organized by theme.

Lower impact issues are included in the Appendix.

# TABLE OF CONTENTS: HIGH/MEDIUM RATED ISSUES

THEME

ISSUE

Issue Rating Legend	
High	
Medium	
Low	

# Non-Responsive

Trees & Vegetation

Osgoode Station - Proposed Station Location, Archaeology Work and Tree Removals (OL)

Non-Responsive

Moss Park Station (OL)

# Non-Responsive



Non-Responsive

Non-Responsive

Non-Responsive

Non-Responsive

Non-Responsive

Non-Responsive

Non-Responsive

Non-Responsive



Non-Responsive

Non-Responsive

Non-Responsive

Non-Responsive

Non-Responsive

Non-Responsive

Non-Responsive

Non-Responsive



# TREES & VEGETATION

## SAMPLE MITIGATIONS

Careful selection of spaces required for development

Limit removals to only what is needed

Tree ceremonies, plantings and community give away events

Community working groups (Construction Liaison Committees)

Restoration plans co-created by arborists, First Nations, communities & municipalities

On average, 3 trees planted for every 1 removed

Reuse of tree logs and mulch donated back to community

Coordination with municipal vegetation and ravine strategies

Early, ongoing and transparent communication including briefings and notices



# Osgoode Station - Proposed Station Location, Archaeology Work and Tree Removals

Issue Rating: 

ONTARIO LINE

**Community Flashpoint:** Community members, local leaders, Indigenous groups and law associations oppose the station location and tree removals at this historic, downtown site.

- Details:**
- Significant negative reaction from the community - including legal challenges - regarding the tree removals for the new Osgoode Station.
  - The Law Society of Ontario, Campbell House Museum and community groups have vocally opposed the proposed station location at the southwest corner of Osgoode Hall.
  - Following court proceedings, tree removals proceeded in February 2023.
- Timeline:**
- Archaeological work to be completed summer 2023
  - Stage 3 archaeology work began mid-June 2023
  - Ontario Transit Group (OTG) to commence work fall 2023 - pending results of archaeology work
  - Watermain replacement on University Avenue Northbound lane closures until fall 2023



## Issues Management Strategy - Being Implemented

- Pre-emptive Mitigation(s):**
- Reduced footprint of station by 29 per cent.
  - Explore options to mitigate the concerns raised by First Nations, in particular HDI.
  - City of Toronto has retained a third-party to review the technical proposal for the proposed Osgoode Station location. On February 1, 2023, Metrolinx hosted a community meeting with the City to prevent its review.
  - Metrolinx continues to meet with community organizations in the vicinity and will launch a Construction Liaison Committee (CLC) July 18, 2023.

- Ongoing Management:**
- Regular meetings with Chief Justice of Ontario and Law Society of Ontario.
  - Establishment of CLC to keep community and stakeholders informed of construction activities.
  - Community notices will be issued in advance of upcoming works within the area.

Non-Responsive

# Moss Park Station

Issue Rating:



ONTARIO LINE

**Community Flashpoint:** Metrolinx construction will remove most of the trees along the south side of this park, which are used for shade and shelter by vulnerable residents of the area.

## Details:

- Following protests and interference by HDI in January 2023, tree removals were completed in February 2023 to allow for Stage 3/4 Archaeology work.
- Community benefits are of great interest, particularly employment opportunities. The Moss Park Coalition along with the Toronto Community Benefits Network hosted an emergency Town Hall on June 29<sup>th</sup> asking Metrolinx to come forward with meaningful benefits to the community. They voiced concerns that awarded contracts did not contain hiring targets requirements.
- Metrolinx working with the City and community groups to find alternate locations for vulnerable outreach services that will be displaced due to construction at Queen and Sherbourne Streets.
- No impact to the existing Moss Park Arena or John Innis Community Recreation Centre by Metrolinx, however, the City will be undertaking concurrent renovations that will impact access and park space.

## Timeline:

- February 2023: Tree removals (61 trees removed in total. 22 were non-indigenous).
- Site mobilization for archaeology work to commence in May 2023.



## Issues Management Strategy - Being Implemented

### Pre-emptive Mitigation(s):

- Enhanced compensation provided to the City of Toronto at a rate about five times higher than normal to support future vegetation restoration. This is warranted due to the level of impact, uniqueness of the situation, and integration of the park with the community.

### Ongoing Management:

- Negotiations with Indigenous community opposing the removals.
- Established CLC in place to keep community informed and address concerns.
- Metrolinx continues to work with the City to identify temporary parking area, and to coordinate the integration of the station design with the Moss Park Revitalization Project lead by the City.
- Previously donated wood from removed trees to community centre wood-working program.

Non-Responsive

Non-Responsive

Non-Responsive

Non-Responsive



Non-Responsive

Non-Responsive

Non-Responsive

Non-Responsive

Non-Responsive

Non-Responsive

# APPENDIX

## A. KEY CONTACTS

Contact	Title	E-mail	Project(s)
<b>Non-Responsive</b>			
Darren Cooney	Director, Community Engagement	darren.cooney@metrolinx.com	Non-Responsive Ontario Line Non-Responsive



Non-Responsive

Non-Responsive

Non-Responsive

Non-Responsive

Non-Responsive

Non-Responsive

Non-Responsive

Non-Responsive



Non-Responsive

Non-Responsive

Non-Responsive

Non-Responsive

Non-Responsive

Non-Responsive

Non-Responsive

Non-Responsive



Non-Responsive

Non-Responsive

Non-Responsive

